

Artist's Name:
Amy Sherald

Art Period/Style:
Portraiture / American Realism

Years Active:
1950's - Present

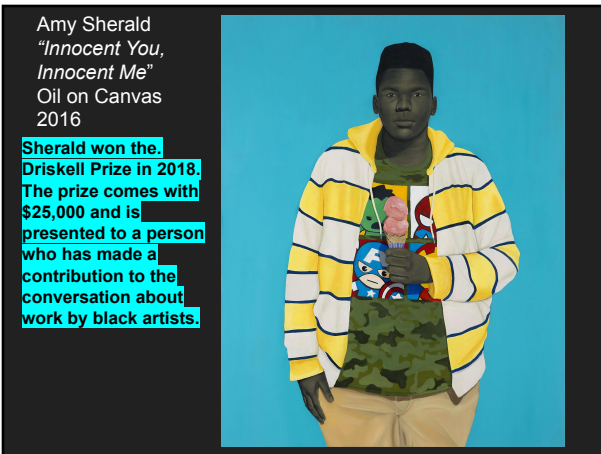
Birthplace:
Columbus, Georgia USA

Birth/Death Dates:
August 30th, 1973 - (She is 46.)



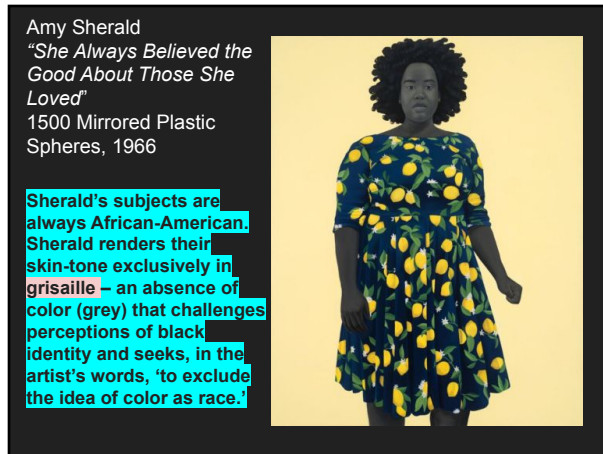
Amy Sherald
"Michelle Obama"
Oil on Canvas
2017

Sherald was the first female African American artist chosen to create the portrait of any First Lady. She was chosen by the subject, Michelle Obama. Sherald's work focuses on issues of race and identity in America.



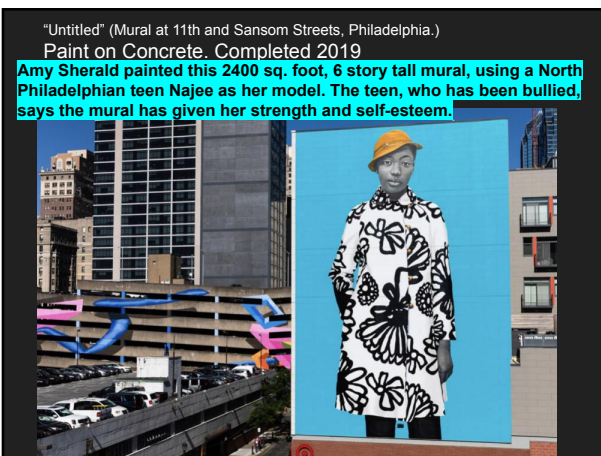
Amy Sherald
"Innocent You, Innocent Me"
Oil on Canvas
2016

Sherald won the Driskell Prize in 2018. The prize comes with \$25,000 and is presented to a person who has made a contribution to the conversation about work by black artists.



Amy Sherald
"She Always Believed the Good About Those She Loved"
1500 Mirrored Plastic Spheres, 1966

Sherald's subjects are always African-American. Sherald renders their skin-tone exclusively in grisaille – an absence of color (grey) that challenges perceptions of black identity and seeks, in the artist's words, 'to exclude the idea of color as race.'



"Untitled" (Mural at 11th and Sansom Streets, Philadelphia.)
Paint on Concrete. Completed 2019

Amy Sherald painted this 2400 sq. foot, 6 story tall mural, using a North Philadelphia teen Najee as her model. The teen, who has been bullied, says the mural has given her strength and self-esteem.